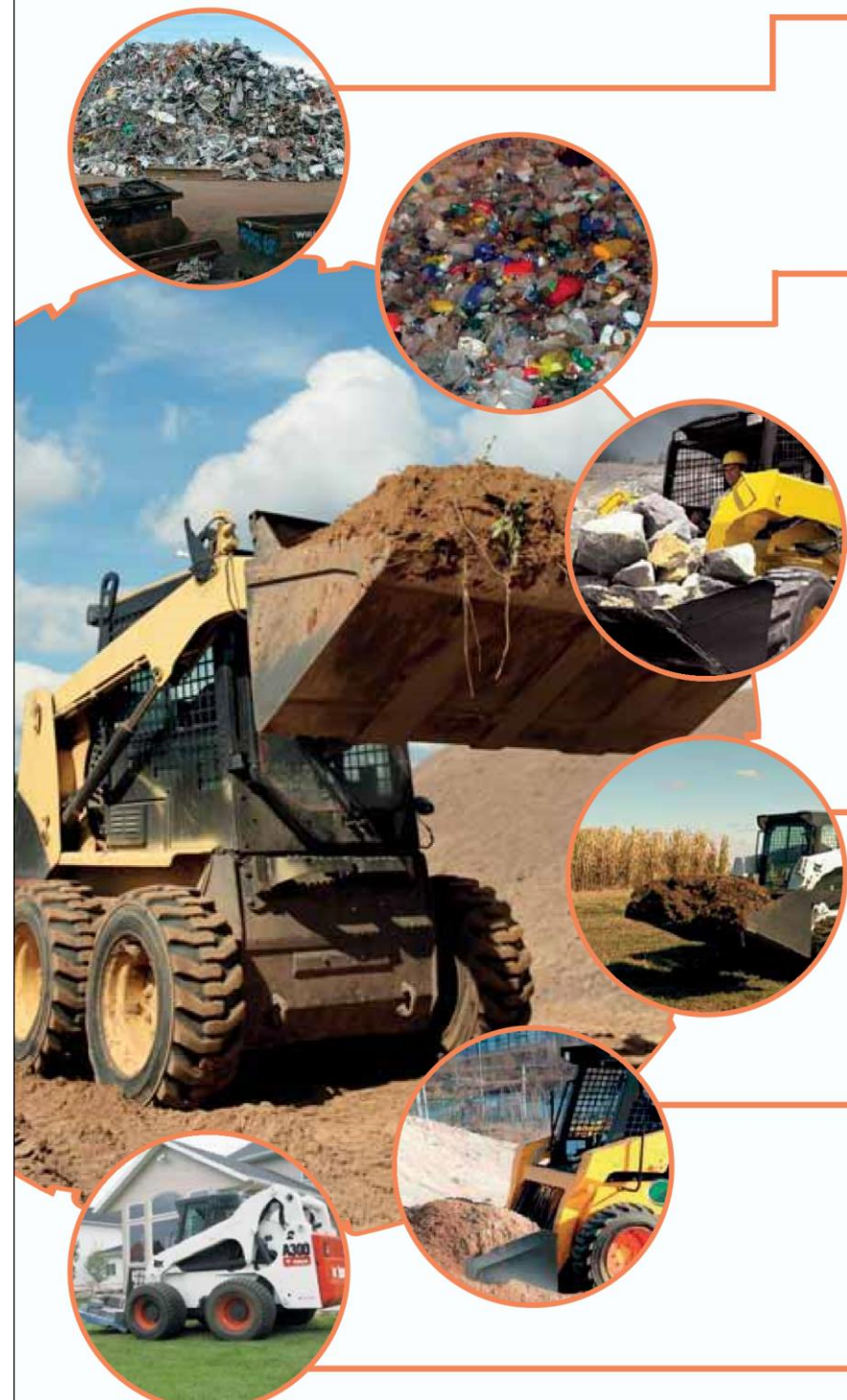


MAJOR APPLICATIONS OF SKIDSTEER



CONDITIONS

- SEVERE DUTY SOLIDS**
 - Demolition/Construction Sites
 - Metal Scrapyards
 - Glass Recycling

- SEVERE DUTY PNEUMATICS**
 - Hard Abrasive Yards
 - Garbage Scrapyards
 - Recycling Facilities

- HEAVY DUTY PNEUMATICS**
 - Rubble Removal
 - Construction
 - Municipality Works

- STANDARD DUTY PNEUMATICS**
 - Agriculture
 - Construction
 - Municipality Works

- LIGHT DUTY PNEUMATICS**
 - Agriculture
 - Landscaping
 - Light Duty Construction

- SPECIALITY PNEUMATICS**

REQUIREMENTS

- Resist penetrating debris
- Abrasion resistance
- Zero downtime due to punctures and cuts

- Abrasion resistance
- Resist failure due to cuts & chipping
- Minimum downtime/maximum life

- Multi-purpose high hour operations by same equipment
- Work on hard surfaces/mud/slopes

- Multi-purpose operations by same equipment
- Value for money offering

- Traction & self-cleaning on loose off-road surfaces
- Budget offering when limited puncture protection required

SOLUTIONS

- Solid construction
- High tread depth
- Three times life of a pneumatic tire/rim assembly provided

- High solid to void ratio
- Strong sidewall & tread construction
- High tread depth

- Beefy lug pattern
- Wide centre tread with large lug overlap

- Specialized lug pattern
- Optimal tread depth & design

- Open lug pattern
- Optimal tread depth & max self-cleaning

OUR OFFERING



HULK SDS
Industry Leading Tread Depth



SUPER SMOOTH SDS
Maximized Usable Rubber Volume



BEEFY BABY SDS
Traction Multi-purpose^ Pattern



BOSSMAN GRIP(STEEL) II
Steel Belted



HULK
Maximum Tread Depth



KING KONG
Super Severe Mine Compound



BEEFY BABY III
Higher Tread Depth



BEEFY BABY II
OEM Preference



MARATHONER
Reinforced Perpendicular Lug



XD 2010
Cascaded Lug Pattern



SK-906
Cascaded Lug Pattern



SKIDDO
Max Self Cleaning



SK-903
Max Self Cleaning



HIPPO
For flotation in soft soil and mud (wide version of Beefy Baby-II).



MUDDY BUDDY
For high traction in soft soil and mud.



MIGHTY MOW
For turf and sand work. Solid block type.



TRAC STAR ND
For turf, sand and hard surface work. Solid block type.



MUTI-USE 550
Steel belted for application requiring high traction in snow and mud.

^Multipurpose Pattern indicates that in addition to working in the above mentioned applications this pattern can be used even at construction sites, dairy farms etc