

GALAXY
APPLICATION SPECIFIC, PURPOSE BUILT.

LOADER SOLID TIRES

GET MORE FOR YOUR MONEY
MORE RUBBER. DEEPER TREADS. LONGER LIFE.



ATG

A GROUP COMPANY OF
YOKOHAMA

Skid Steer

BEEFY BABY SDS

Multi-purpose traction tread pattern

- High solid to void pattern with large central block for long tread wear
- Steel wire creel beads prevent rim slippage
- Solid construction eliminates punctures, ensuring maximum uptime
- Aperture variant available for improved ride comfort



GALAXY BEEFY BABY SDS STHL - TIRE ONLY

Product Code	Aperture	WT. (lbs.)	Size	Wheel Size	Bolt Pattern	NSD (32nds)*	OD (inch)	SW (inch)	Single LCC (lbs.)
587711	Y	139	31X10-20 (10-16.5)	20 x 7.5	NA	43	31	10	7,535
587713	Y	193	33X12-20 (12-16.5)	20 x 7.5	NA	51	33	12	9,724
588711	N	144	31X10-20 (10-16.5)	20 x 7.5	NA	43	31	10	8,866
588713	N	200	33X12-20 (12-16.5)	20 x 7.5	NA	51	33	12	11,440
587927	Y	300	36x14-20 (14-17.5)	20 X 7.5	NA	89	36	14	13,650

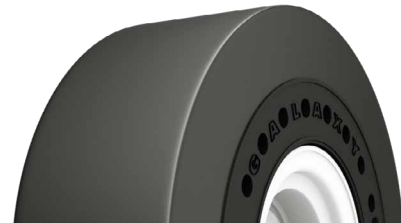
GALAXY BEEFY BABY SDS STHL - ASSEMBLY

Left	Right	Aperture	WT. (lbs.)	Size	Wheel Size	Bolt Pattern	NSD (32nds)*	OD (inch)	SW (inch)	Single LCC (lbs.)
594711	594712	Y	243	31X10-20 (10-16.5)	20 x 7.5	8 ON 8	43	31	10	7,535
594713	594714	Y	297	33X12-20 (12-16.5)	20 x 7.5	8 ON 8	51	33	12	9,724
594732	594734	Y	297	33X12-20 (12-16.5)	20 x 7.5	8 ON 10.75	51	33	12	9,724
595711	595712	N	246	31X10-20 (10-16.5)	20 x 7.5	8 ON 8	43	31	10	8,866
595713	595714	N	303	33X12-20 (12-16.5)	20 x 7.5	8 ON 8	51	33	12	11,440
602927	596927	Y	405	36x14-20 (14-17.5)	20 X 7.5	8 ON 8	89	36	14	13,650

GALAXY SUPER SMOOTH SDS STHL L4S

Maximized usable rubber – smooth pattern

- Flat tread radius for even & reduced wear and low ground pressure
- Steel wire creel beads prevent rim slippage
- Solid construction eliminates downtime due to punctures
- Aperture variant available for improved ride comfort



Tire Only	*Assembly	Aperture	WT. (lbs.)	Size	Wheel Size	Bolt Pattern	NSD (32nds)*	OD (inch)	SW (inch)	Single LCC (lbs.)
590715	597715	Y	155/†260	31x10-20 (10-16.5)	20 x 7.5	8 ON 8	69	30.9	9.4	7,535
590716	597716	Y	214/†319	33x12-20 (12-16.5)	20 x 7.5	8 ON 8	93	32.8	11.3	9,724
590716	597709	Y	214/†319	33x12-20 (12-16.5)	20 x 7.5	8 ON 10.75	93	32.8	11.3	9,724
591715	598715	N	157/†262	31X10-20 (10-16.5)	20 x 7.5	8 ON 8	69	30.7	9.3	8,866
591716	598716	N	222/†328	33X12-20 (12-16.5)	20 x 7.5	8 ON 8	93	32.7	11.3	11,440

GALAXY HULK SDS L-5 LH WITH APERTURES

Extra-deep sturdy block pattern

- Industry-leading tread depth for longer life
- High solid to void pattern with large central block for long tread wear
- Steel wire creel beads prevent rim slippage
- Solid construction eliminates punctures, ensuring maximum uptime
- Aperture variant available for improved ride comfort



Tire Only	Assembly†	Side	WT. (lbs.)	Size	Wheel Size	Bolt Pattern	NSD (32nds)*	OD (inch)	SW (inch)	Single LCC (lbs.)
583717	589717	L	157/†236	30X10-16 (10-16.5)	16 x 6.0	8 ON 8	75	30.2	9.4	8085
	589718	R	157/†236	30X10-16 (10-16.5)	16 x 6.0	8 ON 8	75	30.2	9.4	8085
583719	589719	L	237/†292	33X12-16 (12-16.5)	16 x 8.0	8 ON 8	80	32.7	10.9	10428
	589720	R	237/†292	33X12-16 (12-16.5)	16 x 8.0	8 ON 8	80	32.7	10.9	10428

* NSD on Smooth tires indicates depth of usable rubber.

† Weights refer to assembly SKU

Wheel Loader

GALAXY SUPER SMOOTH SDS STHL - TIRE ONLY

Maximized usable rubber – smooth pattern

- Flat tread radius for even and reduced wear and low ground pressure
- Steel wire creel beads prevent rim slippage
- Solid construction eliminates downtime due to punctures
- Aperture variant available for improved ride comfort



Product Code	Aperture	WT. (lbs.)	Size	Rim	Wear Limit (32nds)	OD (inch)	SW (inch)	Single LCC (lbs.)
590466	Y	1,411	16.00-25	11.25-25	271	58.8	16	24,068
590471	Y	1,802	20.5-25	17.0-25	271	59.0	20.5	26,730
590483	Y	2,650	23.5-25	19.5-25	314	64	23.5	30,580
597488	Y	3,499	26.5-25	22.0-25	342	67.5	26.5	40,150
590491	Y	4,447	29.5-25	25-25	380	72.5	29.5	47,960

LHD 500 SDS STHL - TIRE ONLY

Large Lug Traction Pattern

- Flat tread radius for reduced even wear
- Optimum lug to void ratio ensuring optimum traction and better heat dissipation
- Steel wire creel beads for improved grip with rim and prevention of rim slipping
- Solid construction eliminates breakdown of equipment owing to punctures
- Single aperture variant available for improved ride comfort

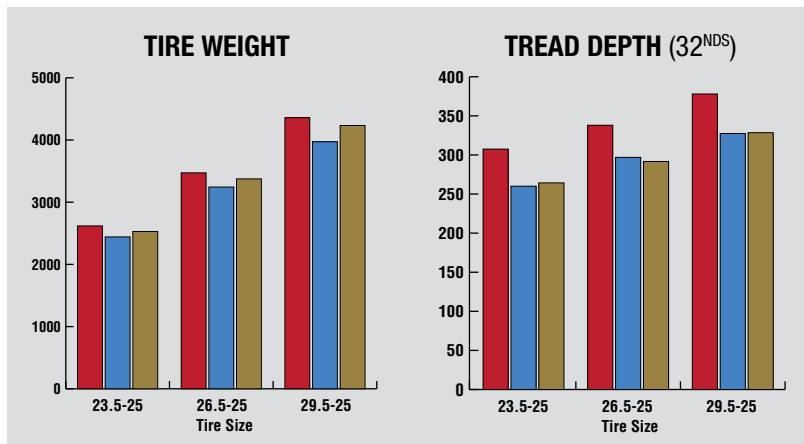


Product Code	Aperture	WT. (lbs.)	Size	Rim	Wear Limit (32nds)	OD (inch)	SW (inch)	Single LCC (lbs.)
581416	Y	891	14.00-24	10.0-24	231	52.6	14	16,995
581460	Y	893	14.00-25	10.0-25	231	52.6	14	16,995
581461	Y	1127	17.5-25	14.0-25	231	52.6	17.5	19,250

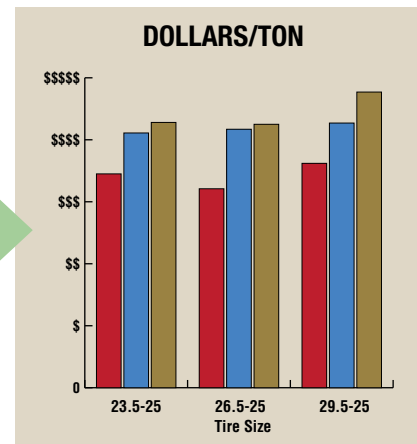
SUPERIOR SOLID PERFORMANCE WITH GALAXY

With increased tread depth, more rubber, and high quality manufacturing, Galaxy solids are the clear choice for scrap yards and transfer stations. In a side by side comparison, the per ton cost of the Galaxy Solid line is lower than the competition. That savings goes right down to the bottom line. Dollar for dollar, Galaxy tires are the SMARTER CHOICE!

HIGHER TIRE WEIGHT AND TREAD DEPTH



LOWER PRICE/TON



■ ATG
 ■ BRAND M
 ■ BRAND T

THE GALAXY SOLID LOADER LINE ADVANTAGE



THE HULK SDS ADVANTAGE

The Hulk SDS is a significant technological achievement, and it is all geared toward providing a longer service life and better cost of ownership for our customers. With a 16-inch rim diameter we are able to put **more rubber per tire, providing longer-life and reducing the number of costly tire changeovers**. We designed the unique, solid construction specifically for machinery and severe-duty applications seen in the waste/recycling and scrap-yard industries.

The Hulk SDS tire assembly has a trademark Hulk block pattern with 81/32nds of non-skid depth, one of the **deepest available in the industry**. Ask your sales rep about the Hulk SDS today!

Specs	Beefy Baby SDS	Hulk SDS
Size	33x12-20	33x12-16
Rim	7.50-20	8.00-16
OD (in)	32	32.68
SW (in)	12	10.91
Weight (lbs)	193	237
NSD (32nds)	51	80
60J (32nds)	92	106
Aperture	Single Row	Single Row
Pneumatic Size	12-16.5	12-16.5
NSD (32nds)	28	44

VISIT ATGTIRE.COM FOR DETAILED LOAD AND PRESSURE TABLES

Distributor:

ATG develops, manufactures and markets superior quality Off-Highway tires, globally, under three well known brands: Alliance, Galaxy and Primex. Specializing in Agriculture, Construction, Forestry, Industrial, Earthmoving, OEM and OTR application tires, the group is one of the fastest growing players in the Off-Highway tire market. ATG is dedicated to providing its customers with low Total Cost of Ownership (TCO) through superior products and exceptional customer support services.



Contact Alliance Tire Americas, Inc. at (800) 343-3276 or (339) 900-8080 for your nearest Alliance Tire Dealer.