

 **ALLIANCE | GALAXY**

SKID STEER FAMILY
INNOVATIVE DESIGNS
FOR A WIDE RANGE OF APPLICATIONS



ATG

BETTER VALUE.
SMARTER CHOICE.

MAJOR APPLICATIONS OF SKID STEER

CONDITIONS

SEVERE DUTY SOLIDS

- Demolition/Construction Sites
- Metal Scrapyards
- Glass Recycling

SEVERE DUTY PNEUMATICS

- Hard Abrasive Yards
- Garbage Scrapyards
- Recycling Facilities

HEAVY DUTY PNEUMATICS

- Rubble Removal
- Construction
- Municipality Works

STANDARD DUTY PNEUMATICS

- Agriculture
- Construction
- Municipality Works

SPECIALITY HEAVY DUTY PNEUMATICS

- Construction
- Agriculture
- Snow removal



^Multipurpose Pattern indicates that in addition to working in the above mentioned applications this pattern can be used even at construction sites, dairy farms etc

REQUIREMENTS

SOLUTIONS

OUR OFFERING

- Resist penetrating debris
- Abrasion resistance
- Zero downtime due to punctures and cuts

- Solid construction
- High tread depth
- Three times life of a pneumatic tire/rim assembly provided



HULK SDS
Industry Leading
Tread Depth



SUPER SMOOTH SDS
Maximized Usable
Rubber Volume



BEEFY BABY SDS
Traction Multi-purpose
Pattern

- Abrasion resistance
- Resist failure due to cuts and chipping
- Minimum downtime/ maximum life

- High solid to void ratio
- Strong sidewall and tread construction
- High tread depth



BOSSMAN GRIPSTEEL II
Steel Belted



HULK
Maximum Tread Depth



KING KONG
Super Severe Mine
Compound

- Multi-purpose multi-shift operations by same equipment
- Work on hard surfaces/ mud/slopes

- Beefy lug pattern
- Wide center tread with large lug overlap



BEEFY BABY III
Higher Tread Depth



BEEFY BABY
OEM Preference

- Multi-purpose operations
- Value for money offering

- Specialized lug pattern
- Optimal tread depth and design



XD 2010
Cascaded Lug Pattern

- Multi-purpose operations
- Built for specific end-user applications



550 MULTI-USE
Maximized footprint and
superior ride



HIPPO
Flotation in soft soil
and mud






MUDDY BUDDY
High traction in soft soil
and mud



MIGHTY TRAC ND
All-season/all-surface tread



MIGHTY MOW
Gentle performance for
turf applications

 = Solid  = Pneumatic  = Radial

SEVERE DUTY SOLIDS

GALAXY HULK SDS STHL L-5 LH WITH APERTURES

MAXIMIZED USABLE RUBBER VOLUME

The Galaxy Hulk SDS is extra deep sturdy block pattern which has high solid to void pattern with large central block for long tread wear. Its solid construction eliminates punctures, ensuring maximum uptime and steel wire creel beads prevent rim slippage. It is available with tire + rim assembly (Lock ring/standard heel type) for quick change of tire. The Galaxy Hulk SDS gives 58% more tread depth compared to standard R-4 solids, providing extended tire life.



TIRE ONLY	ASSEMBLY	SIDE	SIZE	WHEEL SIZE	BOLT PATTERN	NSD (32NDS)	OD (INCH)	SW (INCH)	SINGLE LCC (LBS.)
583717	589717	L	30X10-16 (10-16.5)	16 x 6.0	8 ON 8	75	30.2	9.4	8085
	589718	R	30X10-16 (10-16.5)	16 x 6.0	8 ON 8	75	30.2	9.4	8085
583719	589719	L	33X12-16 (12-16.5)	16 x 8.0	8 ON 8	80	32.7	10.9	10428
	589720	R	33X12-16 (12-16.5)	16 x 8.0	8 ON 8	80	32.7	10.9	10428

GALAXY SUPER SMOOTH SDS STHL L-4S

INDUSTRY-LEADING TREAD DEPTH

The Galaxy Super Smooth SDS is specially designed with maximum usable rubber and a smooth pattern. The flat tread radius provides even and reduced wear and low ground pressure. Steel wire creel beads prevent rim slippage, while solid construction eliminates downtime due to punctures. Aperture variant is available for improved ride comfort.



TIRE ONLY	ASSEMBLY	APERTURE	SIZE	WHEEL SIZE	BOLT PATTERN	NSD (32NDS)*	OD (INCH)	SW (INCH)	SINGLE LCC (LBS.)
590715	597715	Y	31x10-20 (10-16.5)	20 x 7.5	8 ON 8	69	30.9	9.4	7535
590716	597716	Y	33x12-20 (12-16.5)	20 x 7.5	8 ON 8	93	32.8	11.3	9724
591715	598715	N	31X10-20 (10-16.5)	20 x 7.5	8 ON 8	69	30.7	9.3	8866
591716	598716	N	33X12-20 (12-16.5)	20 x 7.5	8 ON 8	93	32.7	11.3	11440

BEEFY BABY SDS STHL R-4 (ASSEMBLY)

TRACTION MULTI-PURPOSE PATTERN

Severe duty solid tire for recycling facilities, demolition sites, and transfer stations. Available both with and without apertures.



LEFT	RIGHT	APERTURE	SIZE	WHEEL SIZE	BOLT PATTERN	NSD (32NDS)*	OD (INCH)	SW (INCH)	SINGLE LCC (LBS.)
594711	594712	Y	31X10-20 (10-16.5)	20 x 7.5	8 ON 8	43	31	10	7,535
594713	594714	Y	33X12-20 (12-16.5)	20 x 7.5	8 ON 8	51	33	12	9,724
594732	594734	Y	33X12-20 (12-16.5)	20 x 7.5	8 ON 10.75	51	33	12	9,724
595711	595712	N	31X10-20 (10-16.5)	20 x 7.5	8 ON 8	43	31	10	8,866
595713	595714	N	33X12-20 (12-16.5)	20 x 7.5	8 ON 8	51	33	12	11,440
602927	596927	Y	36x14-20 (14-17.5)	20 X 7.5	8 ON 8	89	36	14	13,650

SEVERE DUTY PNEUMATICS

GALAXY HULK L-5

OEM FITMENT

MAXIMUM TREAD DEPTH

The Galaxy Hulk has a unique tread pattern that allows it to operate in severe applications while providing superior self cleaning. The Hulk has a minimum tread depth of 44/32nds and a lug-to-void ratio of 68:32. As a result the Hulk will provide long wear and reduce downtime caused by cuts and punctures. It is also built with special cut and chip resistant compounds for durability.



PRODUCT CODE	SIZE	PR/LI	TYPE	NSD (32NDS)	PREFERRED RIM	OD	WIDTH	RC	SLR	MAX LOAD (LBS)	PSI	MAX SPEED
133260	10-16.5	10	TL	44	8.25	31.4	10.2	92.0	14.4	3500	45	5
133266	12-16.5	12	TL	44	9.75	33	12.1	96.0	15.1	4220	40	5
133273	33X15.50-16.5	14	TL	44	12	33.1	15.1	100.0	15.1	4800	35	5
133278	14-17.5	14	TL	46	10.5	36.8	14.1	110.0	16.8	8550	80	5

GALAXY KING KONG L-4

OEM FITMENT

SUPER SEVERE MINE COMPOUND

The Galaxy King Kong L-4 is one of the strongest and most durable skid steer tires on the market. The King Kong has a tread depth of 40/32nds and a 3.5 inch wide lug, and is purpose built for hard surface and rough concrete operations. It is also built with special cut and chip resistant compounds for durability.



PRODUCT CODE	SIZE	PR/LI	TYPE	NSD (32NDS)	PREFERRED RIM	OD	WIDTH	RC	SLR	MAX LOAD (LBS)	PSI	MAX SPEED
132260	10-16.5	10	TL	40	8.25	30.9	10.2	95.0	14.2	3500	45	5
132266	12-16.5	12	TL	40	9.75	32.7	11.6	100.0	15.0	4220	40	5

PRIMEX BOSSMAN GRIPSTEEL II L-4+

STEEL BELTED

The Primex Bossman Gripsteel II is a steel reinforced severe service tire for industry-leading tread stability and penetration resistance. The tire is designed with extra-deep tread and a large center block which helps it to resist skid wear.



PRODUCT CODE	SIZE	PR/LI	TYPE	NSD (32NDS)	PREFERRED RIM	OD	WIDTH	RC	SLR	MAX LOAD (LBS)	PSI	MAX SPEED
138261	10-16.5	12	TL	34	8.25	30.2	10.3	92.0	13.9	3500	45	5
138267	12-16.5	14	TL	44	9.75	33.9	12.2	101.0	15.1	4220	40	5



HEAVY DUTY PNEUMATICS

GALAXY BEEFY BABY III R-4

OEM FITMENT

HIGHER TREAD DEPTH

The Galaxy Beefy Baby III has an advanced new design with an almost 10% deeper tread than its predecessor. It has a flatter tread profile due to the tread overlap and the amount of rubber in the center of the tread. The shallower angle of the lug in the shoulder provides increased traction and the terracing between the lugs promotes self cleaning. Galaxy's signature rim shield has also been enhanced in the Beefy Baby III design.



PRODUCT CODE	SIZE	PR/LI	TYPE	NSD (32NDS)	PREFERRED RIM	OD	WIDTH	RC	SLR	MAX LOAD (LBS)	PSI	MAX SPEED
112259	10-16.5	8	TL	26	8.25	30.9	10.2	92.0	14.2	3500	45	5
112260	10-16.5	10	TL	26	8.25	30.9	10.2	92.0	14.2	3500	45	5
112264	12-16.5	10	TL	28	9.75	32.6	11.8	94.0	14.6	4220	40	5
112266	12-16.5	12	TL	28	9.75	32.7	12.0	95.4	14.8	3520	60	5
112278	14-17.5	14	TL	30	10.5	36.3	13.7	107.5	16.5	8540	80	5

GALAXY BEEFY BABY R-4

OEM FITMENT

PREFERRED BY OEM

The Galaxy Beefy Baby R4 is one of the "beefiest" and best performing R-4 design skid steer tire on the market, making it the standard by which all other skid steer tires are measured. This hard-won reputation was earned over many years of service thanks to the Beefy Baby's durable wear-resistant compound, superior tread design, super sidewall, and rim shield protector.



PRODUCT CODE	SIZE	PR/LI	TYPE	NSD (32NDS)	PREFERRED RIM	OD	WIDTH	RC	SLR	MAX LOAD (LBS)	PSI	MAX SPEED
100259	10-16.5	8	TL	24	8.25	31.1	10.4	93.0	14.4	3500	45	5
100260	10-16.5	10	TL	24	8.25	31.1	10.4	93.0	14.4	3500	45	5
100285	10.5/80-18	10	TL	32	9	36.5	10.8	108.0	16.6	4300	54	25
100264	12-16.5	10	TL	26	9.75	32.8	12.2	97.0	15.1	4220	40	5
100287	12.5/80-18	10	TL	35	9	38.9	12	117.0	17.7	3750	45	25
100289	12.5/80-18	14	TL	35	9	39.3	12.1	118.0	17.8	4400	48	25
100276	14-17.5	10	TL	28	10.5	36.7	13.5	108.0	16.8	6850	55	5
100278	14-17.5	14	TL	28	10.5	36.7	13.5	108.0	16.8	8540	80	5
100297	15-19.5	14	TL	29	11.75	38.7	15.7	117.0	17.7	10060	70	5
100897	15-22.5	12	TL	32	11.75	42.9	15.2	122.8	19.4	9650	70	5
100896	15-22.5	16	TL	32	11.75	42.9	15.2	125.0	19.6	14151	112	5
100372	15-22.5	20	TL	32	11.75	42.9	15.2	122.8	19.4	13600	105	5
100374	18-22.5	18	TL	34	12.25	46.1	17.8	132.2	20.0	9480	75	5
100897	15-22.5	12	TL	32	11.75	42.9	15.2	122.8	19.4	9650	70	5

STANDARD DUTY PNEUMATICS

GALAXY XD 2010 R-4

OEM FITMENT

CASCADED LUG PATTERN

The Galaxy XD 2010 has a solid center for long, even wear on hard surfaces. The deep, open shoulders are designed for traction off road, and are made with a highly abrasion-resistant tread compound. The casing was designed with a neutral contour, which means that the uninflated and inflated shapes are virtually identical.



PRODUCT CODE	SIZE	PR/LI	TYPE	NSD (32NDS)	PREFERRED RIM	OD	WIDTH	RC	SLR	MAX LOAD (LBS)	PSI	MAX SPEED
111026	5.70-12	4	TL	16.4	5JA	22.4	5.9	69.7	10.6	1450	60	5
111833	23x850-12	8	TL	16	7JA	22.6	8.4	65.9	10.2	2105	65	5
11858	23x850-12	12	TL	16	7JA	22.6	8.4	65.9	10.2	2756	100	5
111142	27x850-15	8	TL	16	9.75	32.3	11.6	97.0	15.0	4800	49	6
111152	27x1050-15	8	TL	18	8	27.2	10.2	80.9	12.6	3080	60	5
111259	10-16.5	8	TL	22	8.25	30.3	10	90.0	14.0	3500	45	5
111254	12-16.5	6	TL	22	9.75	32.3	11.6	97.0	15.0			5
111258	10-16.5	6	TL	22	8.25	30.3	10	90.0	14.0			5
111259	10-16.5	8	TL	22	8.25	30.3	10	90.0	14.0	3500	45	5
111259	10-16.5	8	TL	22	8.25	30.3	10	90.0	14.0	3500	45	5
111260	10-16.5	10	TL	22	8.25	30.3	10	90.0	14.0	3500	45	5
111264	12-16.5	10	TL	22	9.75	32.3	11.6	97.0	15.0	4220	40	5
111266	12-16.5	12	TL	22	9.75	32.3	11.6	97.0	15.0	4220	40	5
111273	33x1550-16.5	14	TL	22	12	33	15.5	95.6	14.8	7480	70	5
111276	14-17.5	10	TL	24	10.5	36.3	13.7	109.1	16.5	6845	55	6
111278	14-17.5	14	TL	24	10.5	36.3	13.7	109.1	16.5	8543	80	6
111297	15-19.5	14	TL	27	11.75	40.1	15.3	120.8	18.3	10064	70	6

SPECIALTY HEAVY DUTY PNEUMATICS

GALAXY MIGHTY TRAC ND L-4

ALL-SEASON/ALL-SURFACE TREAD

The Galaxy Mighty Trac ND has exceptional wear resistance on hard surfaces, and superior traction in loose soil applications. The all-season/ all-surface tire is built for applications involving snow.



PRODUCT CODE	SIZE	PR/LI	TYPE	NSD (32NDS)	PREFERRED RIM	OD	WIDTH	RC	SLR	MAX LOAD (LBS)	PSI	MAX SPEED
148260	10-16.5	10		38	8.25	31.4	10.2	92	14.4	3500	40	5
148266	12-16.5	12		43	9.75	33.0	12.1	96	15.1	4220	40	5
148378	14-17.5	14		50	10.50	36.3	13.7	99	16.5	8543	80	5

GALAXY MUDDY BUDDY R-4

SUPER-DEEP TREAD

OEM FITMENT

The Galaxy Muddy Buddy is a skid steer tire with a super deep R-4 tread. The Muddy Buddy has 55% deeper tread than conventional R-4 skid steer tires which results in longer wear on rough concrete and makes it ideal for use on soft soil where high traction is required.



PRODUCT CODE	SIZE	PR/LI	TYPE	NSD (32NDS)	PREFERRED RIM	OD	WIDTH	RC	SLR	MAX LOAD (LBS)	PSI	MAX SPEED
144259	10-16.5	8	TL	42	8.25	30.7	10	91.0	13.9	3500	45	5
144264	12-16.5	10	TL	45	9.75	32.7	11.9	96.0	14.7	4220	40	5

GALAXY HIPPO R-4

FLOTATION SIZES

OEM FITMENT

The Galaxy Hippo R-4 is designed for performance in soft and wet soil conditions. The tires are designed for operation in conditions where extra flotation is required and, in many cases can eliminate the need for expensive and cumbersome tracks.



PRODUCT CODE	SIZE	PR/LI	TYPE	NSD (32NDS)	PREFERRED RIM	OD	WIDTH	RC	SLR	MAX LOAD (LBS)	PSI	MAX SPEED
130174	31X1550-15	8	TL	23	13	31	15.2	95.0	14.4	4540	40	5
130270	31.5X13.00-16.5	10	TL	24	9.75	31.5	12.8	95.0	14.4	3640	30	5
130272	31X1550-16.5	12	TL	24	12	32.6	15.2	96.0	14.6	4940	35	5

GALAXY MIGHTY MOW R-3

GENTLE PERFORMANCE FOR TURF APPLICATIONS

The Galaxy Mighty Mow is engineered to provide superior flotation resulting in a turf friendly tire that will not damage grass or roots. The Mighty Mow works exceptionally well on equipment for lawns, parks, golf courses, playing fields, and cemeteries.



PRODUCT CODE	SIZE	PR/LI	TYPE	NSD (32NDS)	PREFERRED RIM	OD	WIDTH	RC	SLR	MAX LOAD (LBS)	PSI	MAX SPEED
135259	10-16.5	8	TL	18	8.25	30.7	10.4	93.0	14.2	3500	45	5
135266	12-16.5	12	TL	17	9.75	32.8	12.5	99.0	15.0	4189	40	5
135274	14-17.5	6	TL	21	10.5	35.9	13.3	105.0	16.1	8550	30	5

MAXIMUM CARRYING CAPACITY AND AIR PRESSURE

10-16.5	8 PR	4140@60 PSI
10-16.5	10 PR	4710@75 PSI
10-16.5	12 PR	5240@90 PSI
12-16.5	10 PR	5600@65 PSI
12-16.5	12 PR	6320@80 PSI
12-16.5	14 PR	6780@90 PSI

Load and pressure values above reflect those needed to create the optimum footprint. For maximum load carrying capacity see this table.

ALLIANCE 550 MULTI-USE

THE ALL-IN-ONE RADIAL STEEL-BELTED PERFORMER

Alliance is proud to present the MultiUse 550 series – our uniquely-treaded multiuse tire that is just as durable on hard surfaces as it is effective in soft conditions, snow, sand and more. Whether it's for mowing, utility work, plowing snow, the Alliance MultiUse 550 is designed to deliver exceptional performance, superior ride and reliability for construction, municipal and agricultural operators day in and day out.

PRODUCT CODE	SIZE	PR/LI	TYPE	NSD (32NDS)	PREFERRED RIM	OD	WIDTH	RC	SLR	MAX LOAD (LBS)	PSI	MAX SPEED
55000040	265/70R16.5	130A2	TL	29	8.25	30.4	10.5	92.3	13.7	4180	58	5
55000012	305/70R16.5	144A2	TL	30	9.75	32.8	12.0	97.2	14.7	6130	58	5

TREAD
Steel belted tread area helps reduce punctures in the field and gives a larger, more even footprint

CENTER OF TREAD
“S” design block provides a smoother ride on hard surfaces and at high speeds

FOOTPRINT
More rubber on the ground creates a larger footprint and minimizes soil compaction

SIDEWALL
Special compound improves wear and ride performance in all operating conditions

BEAD AREA
Strong bead construction allows for stability and performance on hillsides

GO RADIAL ON YOUR SKID STEER

THE RADIAL FOOTPRINT ADVANTAGE

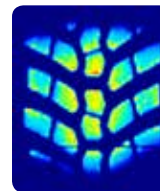
IT'S LARGER

- Increased footprint improves the contact area which implies the radial tire will have more surface contact than a corresponding bias tires and hence improve traction, reduces slippage and therefore improve productivity of the equipment
- Unique tread design offers a large footprint which increases tire life and better even tread wear

IT'S RECTANGULAR

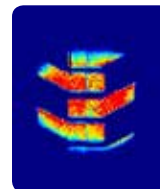
- Steel belts provide a more rectangular flat footprint to disperse load equally across the tread face
- Unique tread design offers less vibrations and superior ride quality
- Radial construction means longer tread life, better traction, higher productivity and less equipment bucking

FOOT PRINT COMPARISON



RADIAL- 305/70R16.5

- Wider rectangular footprints
- Greater surface contact area
- Greater sidewall deflection for smoother ride



BIAS- 12-16.5

- Bias tire has a circular footprint
- Smaller surface area contact
- Stiffer sidewall construction

Distributor:

ATG develops, manufactures and markets superior quality Off-Highway tires, globally, under three well known brands: Alliance, Galaxy and Primex. Specializing in Agriculture, Construction, Forestry, Industrial, Earthmoving, OEM and OTR application tires, the group is one of the fastest growing players in the Off-Highway tire market. ATG is dedicated to providing its customers with low Total Cost of Ownership (TCO) through superior products and exceptional customer support services.

ATG BETTER VALUE. SMARTER CHOICE.

Contact Alliance Tire Americas, Inc. at (800) 343-3276 or (339) 900-8080 for your nearest Alliance Tire Dealer.



facebook.com/alliancetireamericas



@alliancetireamericas



atablogs.atgtire.com



www.atgtire.com